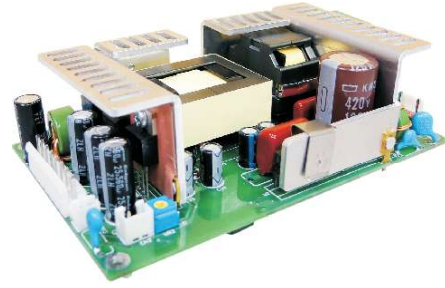


Features:

- Universal AC input / Full range with active PFC
- 5"x 3" footprint
- Medical safety approval: ANSI / AAMI ES 60601-1 / TUV EN 60601-1; IEC 60601-1 / 2xMOPP
- 150W convection cooling and 250W with 23.5 CFM forced air
- Protection: Short circuit, Over load, Over voltage
- High operation temperature up to 70°C
- Power OK signal
- Built-in fan supply
- Withstand 2G vibration test
- 3 years warranty



| MODEL | | MP-250-12 | MP-250-15 | MP-250-24 | MP-250-48 |
|--------------|---|--|------------|------------|------------|
| Output | DC Voltage Range | 12V | 15V | 24V | 48V |
| | Rated Current | 20.85A | 16.67A | 10.45A | 5.25A |
| | Current Range (Convection) | 0 ~ 12.5A | 0 ~ 10A | 0 ~ 6.25A | 0 ~ 3.125A |
| | Current Range (23.5 CFM Fan) | 0 ~ 20.85A | 0 ~ 16.67A | 0 ~ 10.45A | 0 ~ 5.25A |
| | Rated Power (Convection) | 150W | 150W | 150W | 150W |
| | Rated Power (23.5 CFM Fan) | 250.2W | 250W | 250.8W | 252W |
| | Ripple & Noise (Max.) | 120mVp-p | 150mVp-p | 240mVp-p | 480mVp-p |
| | Voltage Adj. Range | ±10% | | | |
| | Voltage Tolerance | ±2.0% | ±2.0% | ±1.0% | ±1.0% |
| | Line Regulation | ±0.5% | ±0.5% | ±0.5% | ±0.5% |
| | Load Regulation | ±2.0% | ±2.0% | ±2.0% | ±2.0% |
| | Setup, Rise Time | 2000ms, 50ms / 230VAC, 3500ms, 50ms / 115VAC at full load | | | |
| Hold Up Time | >10ms / 230VAC, >10ms / 115VAC at full load | | | | |
| Input | Voltage Range | 90 ~ 264VAC, 127 ~ 373VDC | | | |
| | Frequency Range | 47 ~ 63Hz | | | |
| | Efficiency (Typ.) at 230VAC | 90% | 90% | 91% | 91% |
| | AC Current (Typ.) | 3.23A / 100VAC, 1.23A / 240VAC | | | |
| | Inrush Current (Typ.) | Cold Start 30A / 115VAC, 60A / 230VAC | | | |
| | Leakage Current | For earth < 300uA / 264VAC, For patient < 100uA / 264VAC | | | |
| Protection | Over Load | Above 110% rated output power Protection type: latch-style (Recovery after reset AC power ON) | | | |
| | Over Voltage | 115 ~ 140% rated output voltage Protection type: latch-style (Recovery after reset AC power ON) | | | |
| Environment | Working Temp. | -20 ~ 70°C (Refer to output load de-rating curve) | | | |
| | Working Humidity | 20 ~ 90% RH non-condensing | | | |
| | Storage Temp. & Humidity | -40 ~ +85°C, 10 ~ 95% RH | | | |
| | Temp. Coefficient | ±0.03% / °C (0 ~ 50°C) | | | |
| Safety & EMC | Vibration | 10 ~ 500Hz, 2G 10min. / 1cycle, period for 60min. each along X, Y, Z axes | | | |
| | Safety Standards | Meets UL / cUL (ANSI / AAMI ES 60601-1; CAN / CSA-C22.2 No.60601-1); NFPA 99 Meets TUV (EN 60601-1; IEC 60601-1); MOPP approval | | | |
| | Withstand Voltage | I/P-O/P: 4KVAC, I/P-FG: 1.8KVAC, O/P-FG: 1.5KVAC | | | |
| | Isolation Resistance | I/P-O/P: 100M Ohms / 500VDC | | | |
| | EMI Conduction & Radiation | Certified EN 55011 | | | |
| | Harmonic Current | Certified EN 61000-3-2; EN 61000-3-3 | | | |
| Others | EMS Immunity | Certified EN 60601-1-2; IEC 61000-4-2, 3, 4, 5, 6, 8, 11 | | | |
| | MTBF | XXX K HRS Certified MIL-HDBK-217F | | | |
| | Cooling | Free Air convection for 150W, with 23.5 CFM Fan for 250W | | | |
| | Dimension (WxHxD) | 76.2x39.6x127 mm / 3.00x1.43x5.00 inch | | | |
| Note | Packing | 0.32 kg | | | |
| | | 1. All parameters NOT specially mentioned are measured at 230VAC input, rated load and 25°C of ambient temperature. 2. Ripple & noise are measured at 20MHz of bandwidth by using a 12" twisted pair-wire terminated with a 0.1uF & 47uF parallel capacitor. 3. Tolerance: includes set up tolerance, line regulation and load regulation. 4. Line regulation is measured from low line to high line at rated load. 5. Load regulation is measured from 0% to 100% rated load. 6. The power supply is considered a component which will be installed into a final equipment. The final equipment must be re-confirmed that it still meets EMC directives. | | | |

Distributed by: KEPCO, INC. • 131-38 Sanford Ave. • Flushing NY 11355 • Tel: (718) 461-7000 • FAX: (718) 767-1102
 Email: hq@kepcopower.com • www.kepcopower.com

Mechanical Specification:

Unit : mm / inch

AC Input Connector (CN1): JST B3P-VH or equivalent

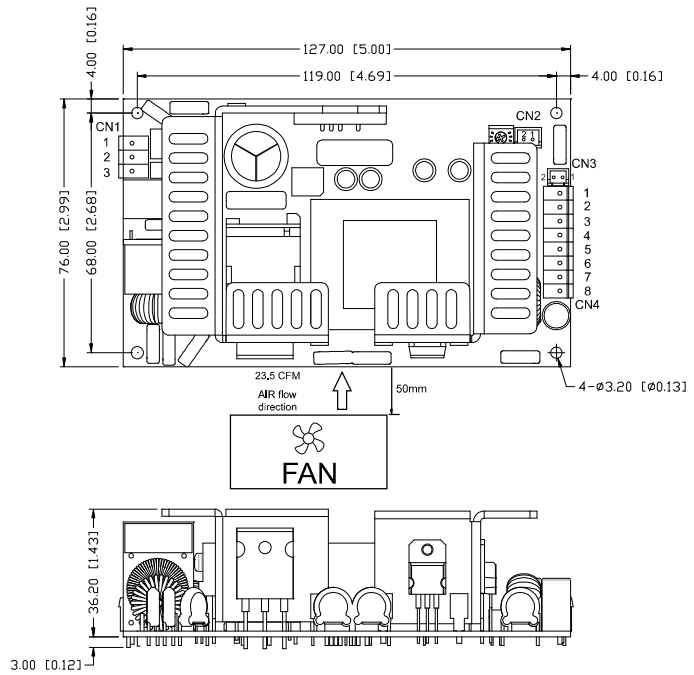
| Pin No. | Assignment | Mating Housing / Contact | |
|---------|------------|-----------------------------|-----------------------------------|
| 1 | AC / N | JST VHR-3N or equivalent | JST SVH-21T-P1.1 or equivalent |
| 2 | No Pin | | |
| 3 | AC / L | | |

External Fan Power Connector (CN2): JST B2B-XH-A or equivalent

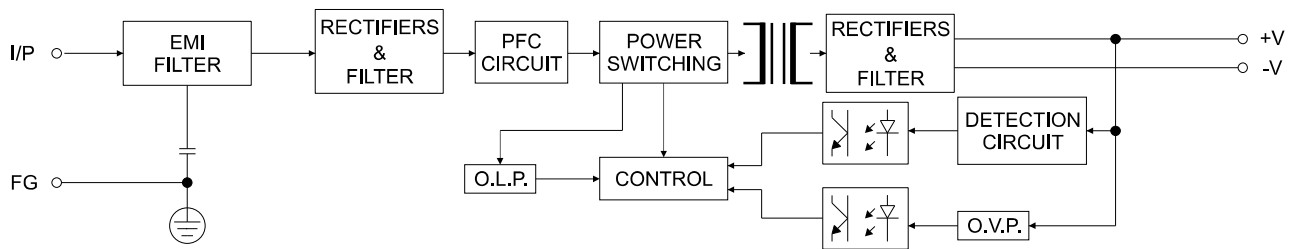
| Pin No. | Assignment | Mating Housing / Contact | |
|---------|------------|----------------------------|------------------------------------|
| 1 | GND | JST XHP-2 or equivalent | JST SXH-001T-P0.6 or equivalent |
| 2 | +12V | | |

DC Output Connector (CN4): JST B6P-VH or equivalent

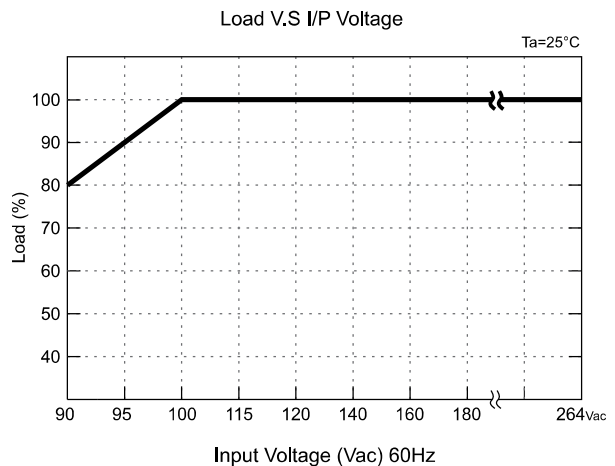
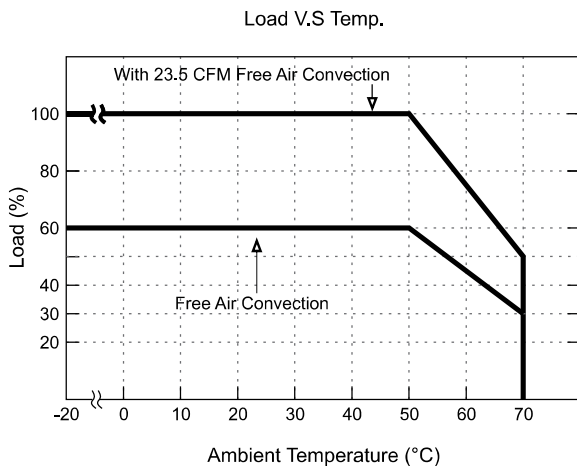
| Pin No. | Assignment | Mating Housing / Contact | |
|---------|------------|-----------------------------|-----------------------------------|
| 5,6,7,8 | +VO | JST VHR-6N or equivalent | JST SVH-41T-P1.1 or equivalent |
| 1,2,3,4 | -VO | | |



Block Diagram:



De-rating Curve:



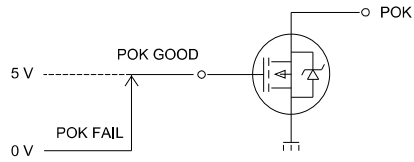
Distributed by: KEPCO, INC. • 131-38 Sanford Ave. • Flushing NY 11355 • Tel: (718) 461-7000 • FAX: (718) 767-1102
 Email: hq@kepcopower.com • www.kepcopower.com

*Note: The specifications are subject to change without notice.

■ Fuction Description of CN3:

2.P-OK CONTROL

POK Signal use open drain mosfet control
MAX:30Vds,0.1A



P.OK connect CN3:

| | | |
|------------|------|-----|
| Pin NO | 1 | 2 |
| Assignment | P.OK | GND |

Distributed by: KEPCO, INC. • 131-38 Sanford Ave. • Flushing NY 11355 • Tel: (718) 461-7000 • FAX: (718) 767-1102
Email: hq@kepcopower.com • www.kepcopower.com